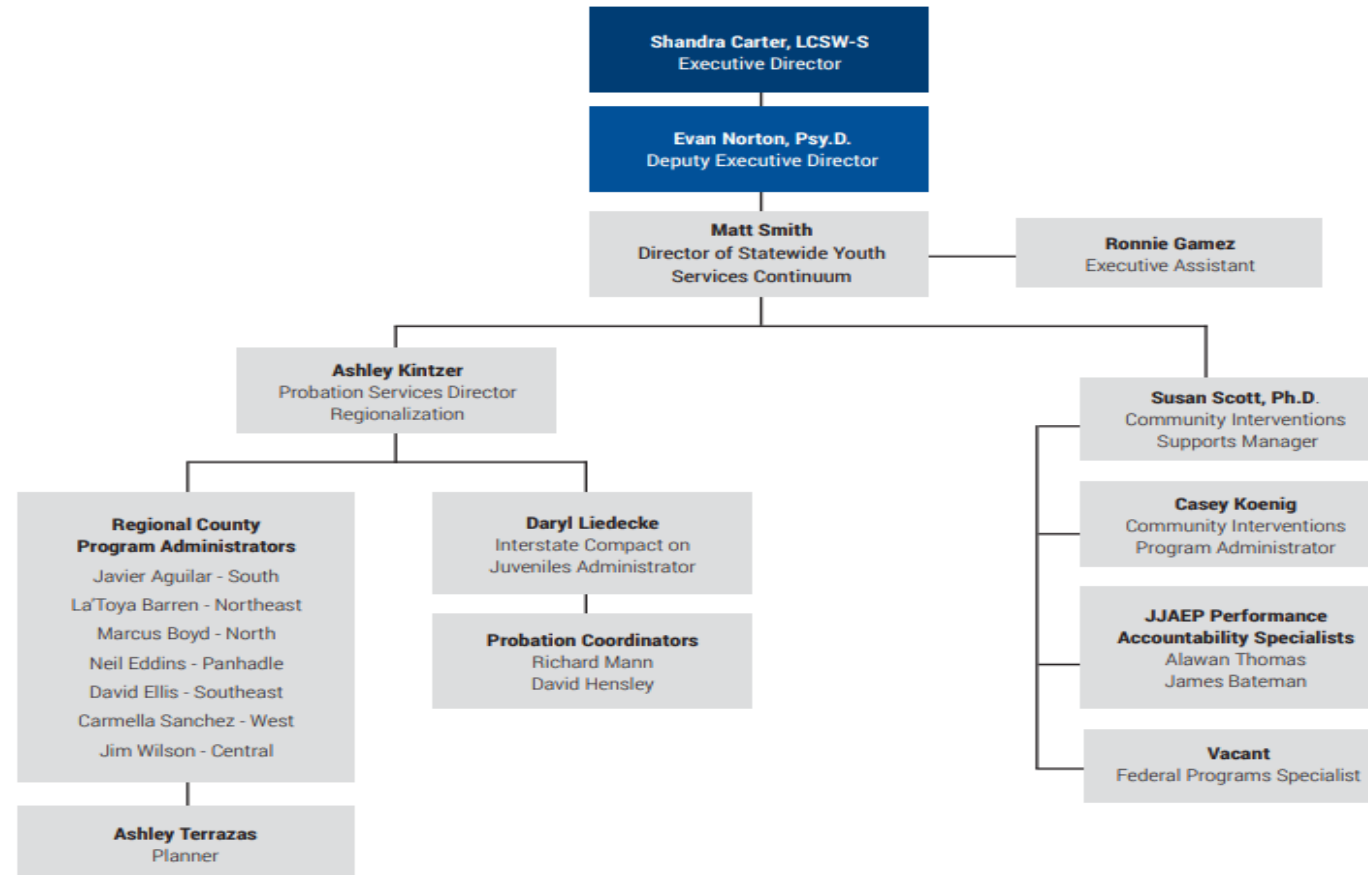




Probation & Regionalization Updates

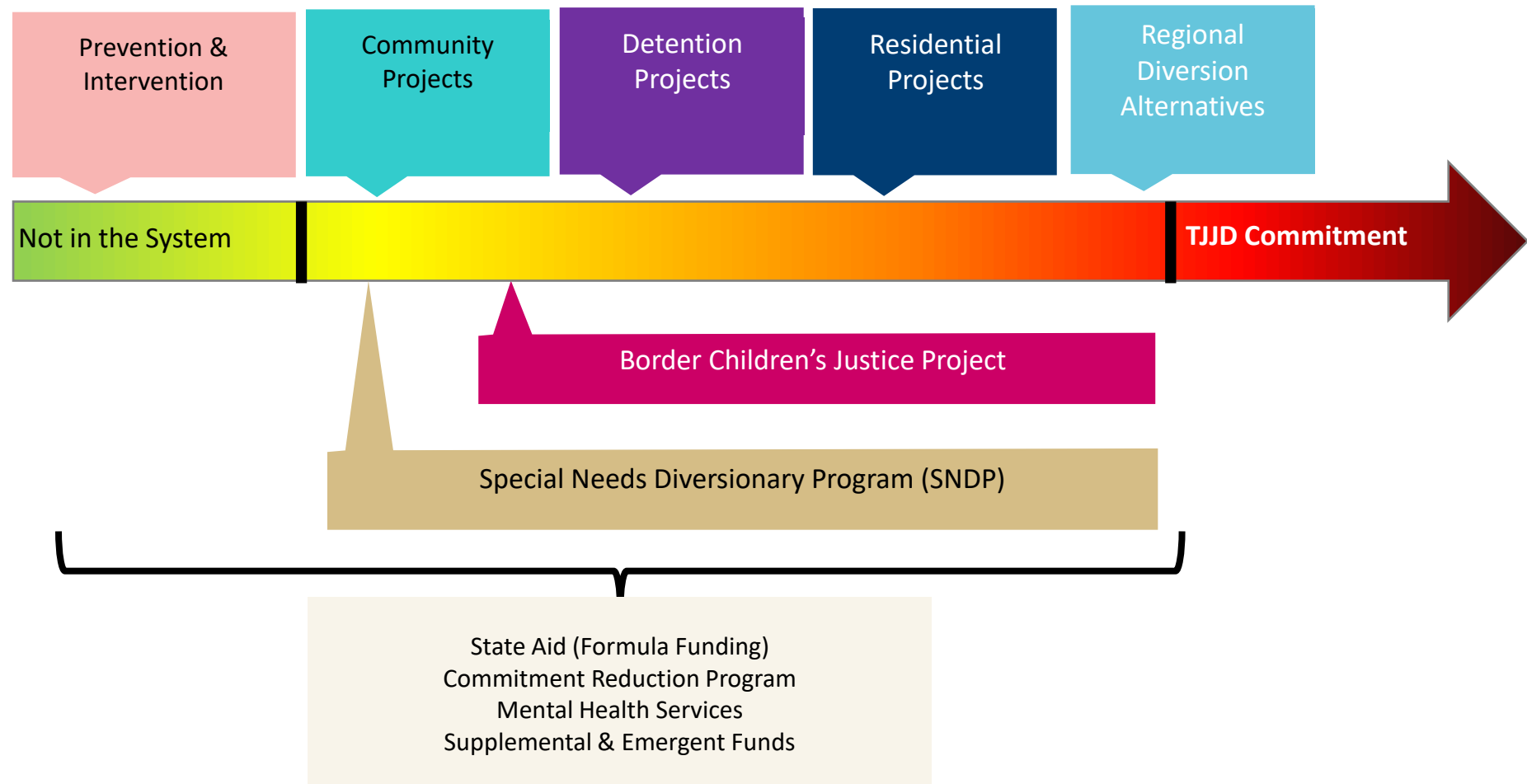
PROBATION SERVICES ORG CHART



INTEGRATING REGIONAL & PAROLE TEAMS

- Legislative changes to parole budget
- TJJD budget can absorb the cost
- Opportunity to integrate, look for efficiencies

Funding for Juvenile Probation Departments



Discretionary State Aid



New DSA Application

- Target and Priority Populations
- Approach/Methodology
- Safety/Security
- Regional Approach/Sharing Resources Across Dept and/or Agencies
- Risk/Needs/Responsivity Focus
- Cost

Discretionary State Aid – COMMUNITY

TIMELINE/CONTACTS

<i>June 25, 2025</i>	Applications distributed to depts.*
<i>July 30, 2025</i>	Applications due to TJJD
<i>August 20, 2025</i>	Notices of award given to applicants

Grant/Application Questions: Ashley Kintzer
Ashley.Kintzer@tjtd.texas.gov

Programmatic/Treatment Questions: Dr. Susan Palacios
Susan.Palacios@tjtd.texas.gov

Data/Logic Model Support: Research Team
Research@tjtd.texas.gov

PRIORITY POPULATION

- Assessment Centers/Youth Diversion Centers
- School/Justice Partnership, School-Based Diversion
- In-Home Family Services/Support (ex: family partners, case management, counseling/therapy)
- Youth Substance Use Services (prevention, intervention, and/or treatment)
- Youth Mental Health Services (ex: counseling, youth sexual behavior treatment, psychiatric medication management)
- Re-entry/Aftercare Services/Support (supports probation re-entry/aftercare from post-adjudication residential and/or TJJD state facility parole re-entry/aftercare)

NOTE: Departments applying for funding are not required to use the evidence-based, research-based or best practice models in the links below each priority; the links are provided simply as a resource. While departments are encouraged to use evidence-based, research-based or best practice models as a framework, due to cost and provider availability limitations, fidelity to the model is not a requirement.

**Eligible depts. only*

Discretionary State Aid – RESIDENTIAL

TIMELINE/CONTACTS

June 25, 2025 Applications distributed to depts.

July 30, 2025 Applications due to TJJD

August 20, 2025 Notices of award given to applicants

Grant/Application Questions: Ashley Kintzer
Ashley.Kintzer@tjjd.texas.gov

Programmatic/Treatment Questions: Dr. Susan Palacios
Susan.Palacios@tjjd.texas.gov

Data/Logic Model Support: Research Team
Research@tjjd.texas.gov

PRIORITY POPULATION

projects supporting residential programs that increase regional placement capacity to keep youth in placement closer to their home communities

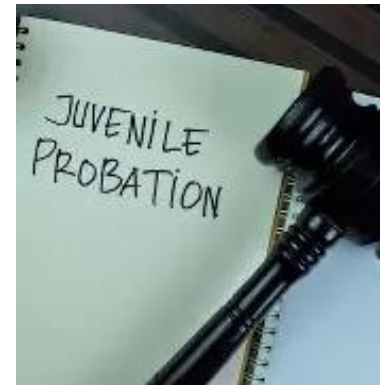
AND/OR

serve female youth.

DSA Projects - Detention

Detention Expansion

- Angelina County
- Bell County
- Collin County
- Denton County
- Grayson County
- Smith County
- Tom Green County



DSA Projects - Residential

Residential Expansion

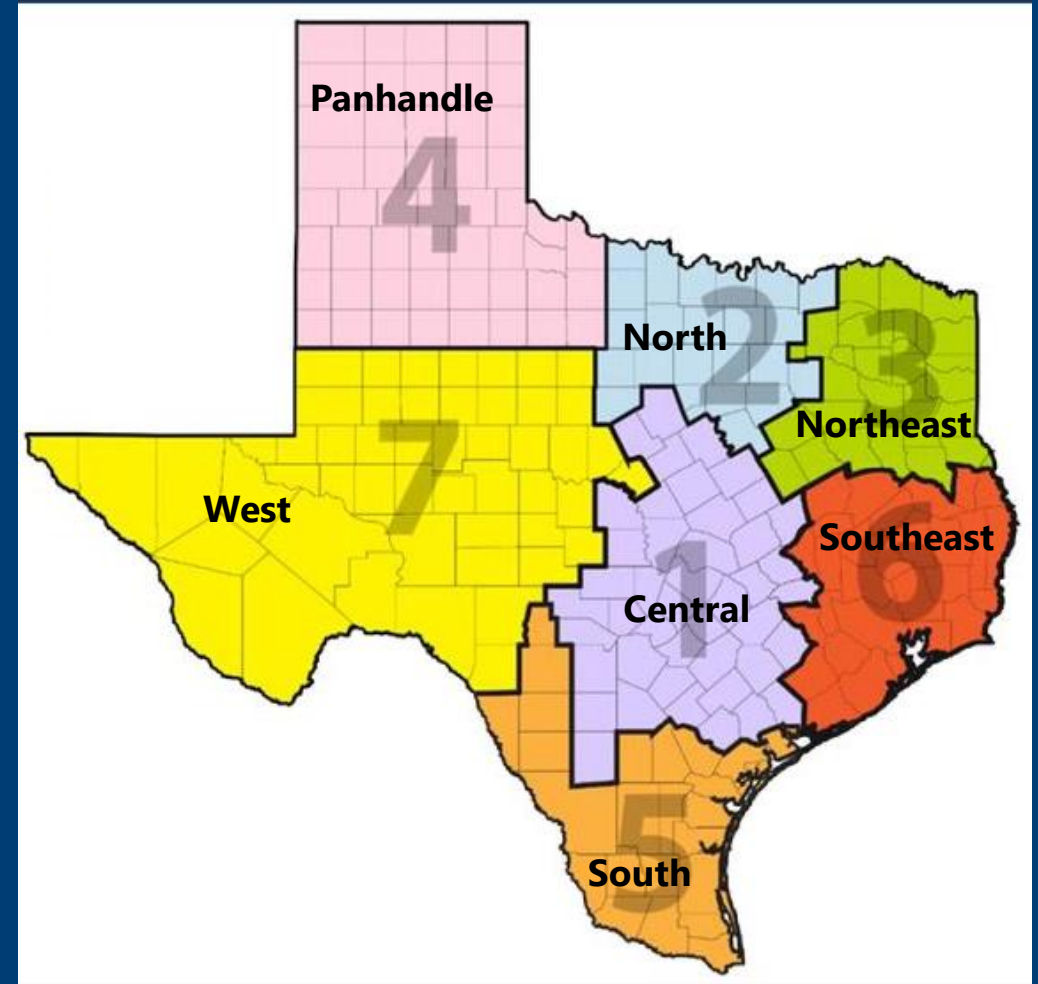
- El Paso County
- Garza County
- Harris County
- Nueces County
- Randall County
- Travis County



Regional Diversion Alternative (RDA)

Priority Population

- younger youth (those between the ages of 10-14);
- youth with a serious mental illness;
- youth with a developmental or intellectual disability;
- youth with only non-violent offenses;
- youth with low- to moderate- risk to reoffend levels;
- youth who scored “Clear Concern” on the CSE-IT;
- youth who have four or more adverse childhood experiences (ACEs) or any of the synergistic pairs of ACEs;
- youth who are/will be parenting;
- female youth with a specialized treatment need;
- older youth in need of vocational or educational services; and/or
- youth who have substance abuse need.



RDA USE & COMMITMENTS BY REGION

Fiscal Year 2025 - July

Region	RDA Received	RDA Placed	1st-Time Commitments	Commitment Goals
Central	80	45	85	122
North	39	18	171	148
Northeast	34	26	39	34
Panhandle	3	3	14	39
South	39	26	18	70
Southeast	36	22	84	151
West	30	14	27	67
Total	261	154	438	631



What Are We Looking For When We Staff an Application?

Does the application meet target population?

The initial target population of youth are all youth who are eligible, and under consideration, for commitment to TJJD.

Have department interventions been appropriate?

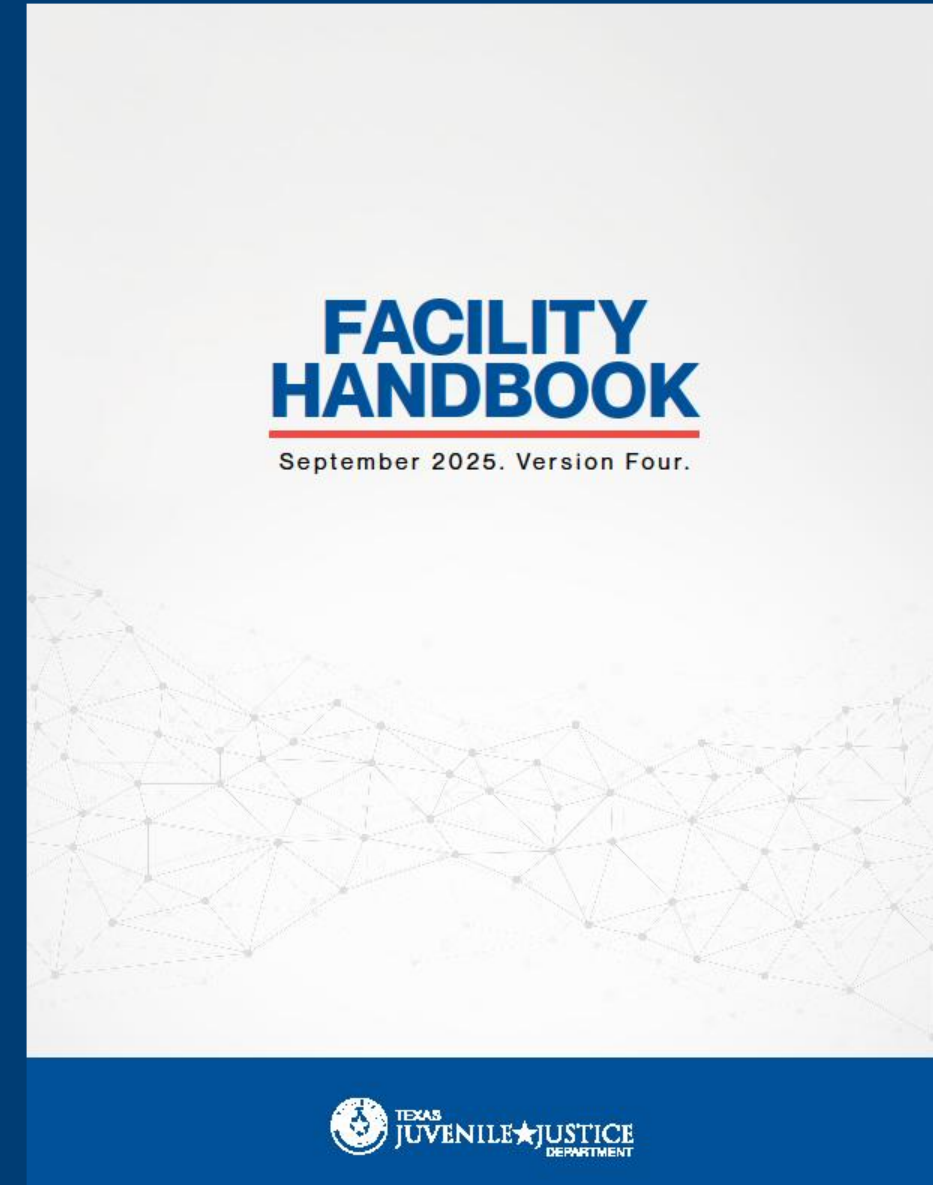
In order to qualify, the juvenile probation department must demonstrate a prior effort to provide appropriate intervention with priority given to the treatment needs of the youth. Intervention should be commensurate with county resources.

Facility Handbook

COMING SOON!

Performance Measures FY 23 + FY 24

- Number of youth served in this facility using RDA funding?
- Number of youth served in this facility using RE funding?
- Number of youth served who were discharged from placement?
- Number of youth served who successfully completed placement?
- Number youth committed to TJJD within one year of discharge?
- Percentage of youth committed to TJJD within one year of discharge?



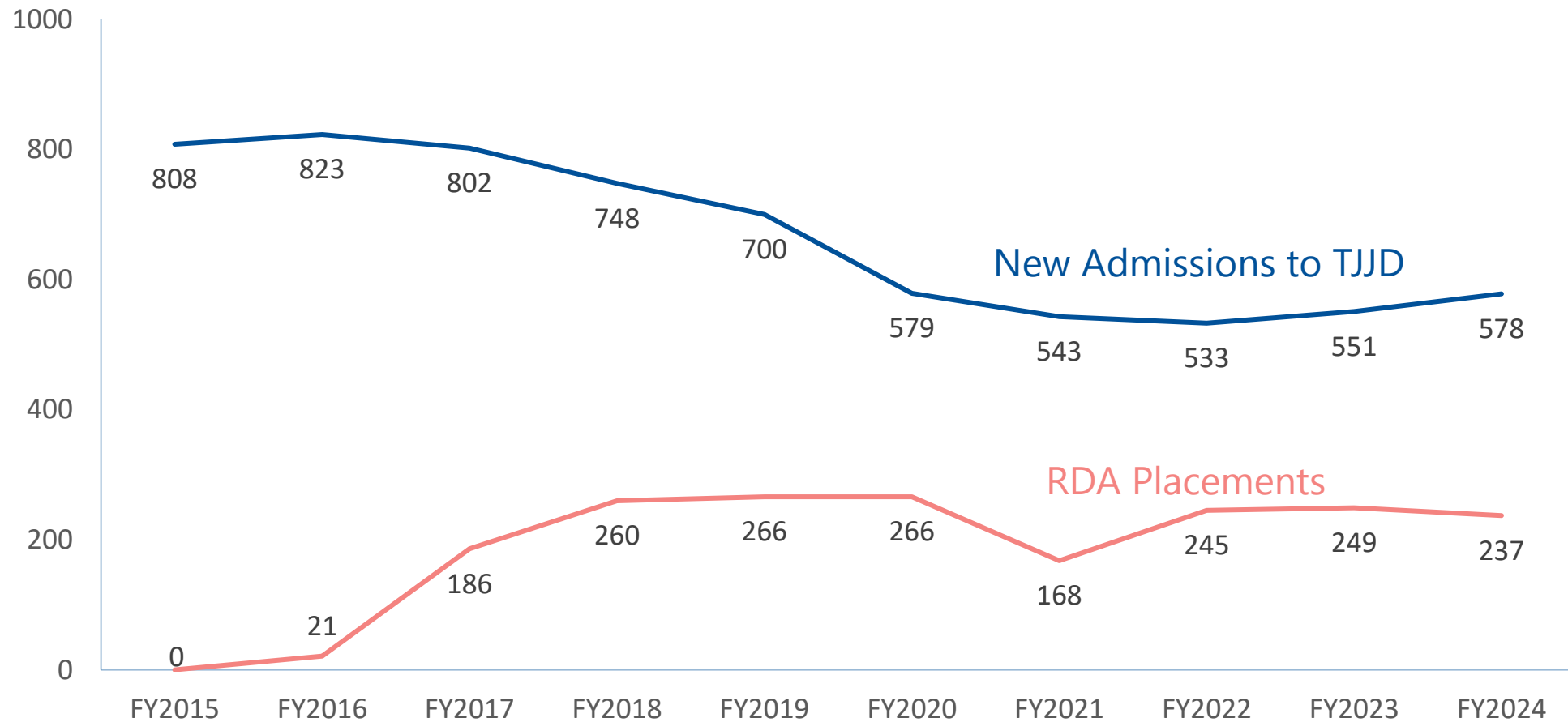
PERFORMANCE MEASURES FY 2023 + FY 2024

In FY 2023 and 2024:

- 29 facilities served 530 total youth placed through RDA/RE
- 549 RDA/RE placed youth were discharged from these facilities
- 405 completed successfully (*75% success rate*)
- 68 youth (*12%*) were committed to TJJD within 1 year of discharge.

Did You Know...

FY15 to FY24 TJJD Commitment and Diversion Efforts





What Are We Looking For When We Staff an Application?

Does the application meet target population?

The initial target population of youth are all youth who are eligible, and under consideration, for commitment to TJJD.

Have department interventions been appropriate?

In order to qualify, the juvenile probation department must demonstrate a prior effort to provide appropriate intervention with priority given to the treatment needs of the youth. Intervention should be commensurate with county resources.

TJJD Sunset Bill

Last session we completed a full review and next session we are required to complete a limited scope review. Here is the focus of the upcoming review:

- Requires Sunset to conduct a limited-scope review during the FY2026-27 biennium focused on the administration of **regionalization duties**, and specifies OIO will not be reviewed at the same time.
- Requires TJJD to submit a report to the Lt. Governor, Speaker, Sunset, and committees of jurisdiction by September 1, 2026, covering progress on the DOJ investigation, waitlist information, staff turnover, and the construction of new state facilities.
- Changes TJJD's abolishment date from September 1, 2027 to September 1, 2031 (*Note: this just means TJJD will have to do another review in 2030 – 2031 to not be abolished*)





Pre-Treatment Curriculum

Pre-Adjudication Facilities

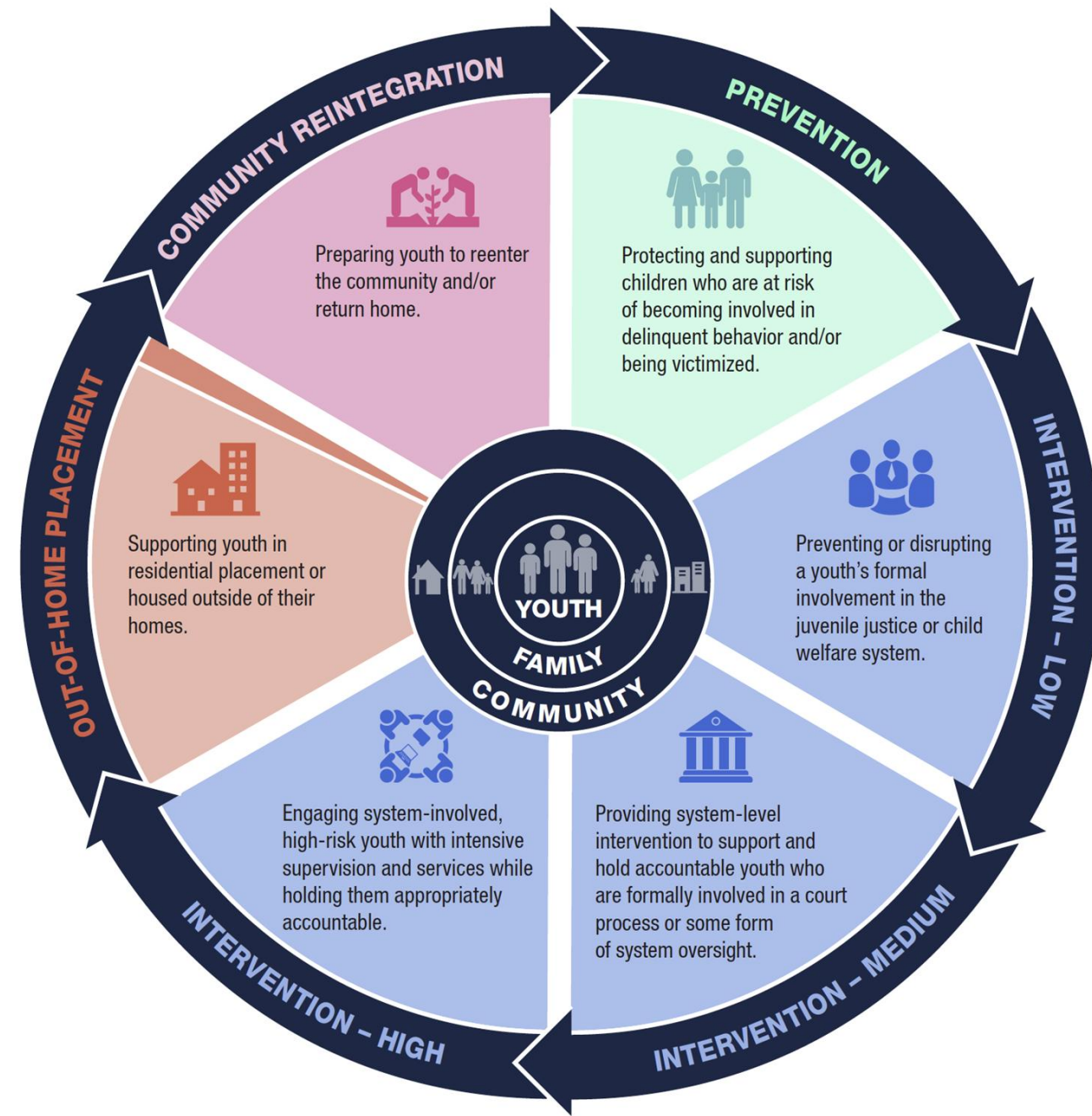
"Jumpstart" DBT treatment for youth awaiting admission at TJJD. Allows youth to be better prepared for receiving treatment at our TJJD secure facilities.

A youth who enters treatment with clear goals in mind and a commitment to reaching them, and who works actively in treatment, will be most likely to return to the community as quickly as possible.

Continuum of Care for Communities

OJJDP's "Continuum of Care (CoC) for Communities" describes a framework for youth justice services—and the dynamic and evolving nature of youth involvement in this continuum. The CoC is a **broad array of youth justice programs and services** ranging from **prevention** programs for **young** children and youth at risk of delinquency to intervention programs serving high-risk youth in secure residential settings and **reentry** programs for youth returning to their communities. The graphic reflects the process for providing services to youth impacted at each stage.

In addition to the array of services, **system and policy changes** play a critical role in achieving a fully effective continuum of care in which the needs of youth and families are met, positive outcomes are achieved, and personal accountability and public safety are maintained.



Project Deliverables



Resource Inventory & Gap Analysis Report for Each Region

Present high-level findings (resources, gaps, challenges, barriers based on data, interviews, mapping, site visits, document review) and recommendations, for each of the 7 TJJD regions.



Continuum of Care Plan (Statewide Findings & Recommendations)

Summarize trends from the 7 regional reports and create a statewide summary of prioritized findings and recommendations; present a visual “Continuum of Care” design for the state



Implementation Roadmap & Sustainability Plan

Operationalize the top recommendations with an implementation plan, timeline and actionable tools; include a plan for funding the recommendations, opportunities for justice reinvestment and sustainability

Office of Juvenile Justice and Delinquency Prevention

Continuum of Care for Communities



TJJD WEBINAR SERIES – CoC Diversion Best Practices

- Paper Referrals
- Prevention Models
- Diversion Center Models
- School-Justice Partnerships
- Alternative Referral Plans
- Law Enforcement First Offender Programs

Questions



Matt Smith, LPC-S

Director of Statewide Youth Services Continuum

Texas Juvenile Justice Department

matthew.n.smith@tjjd.texas.gov